

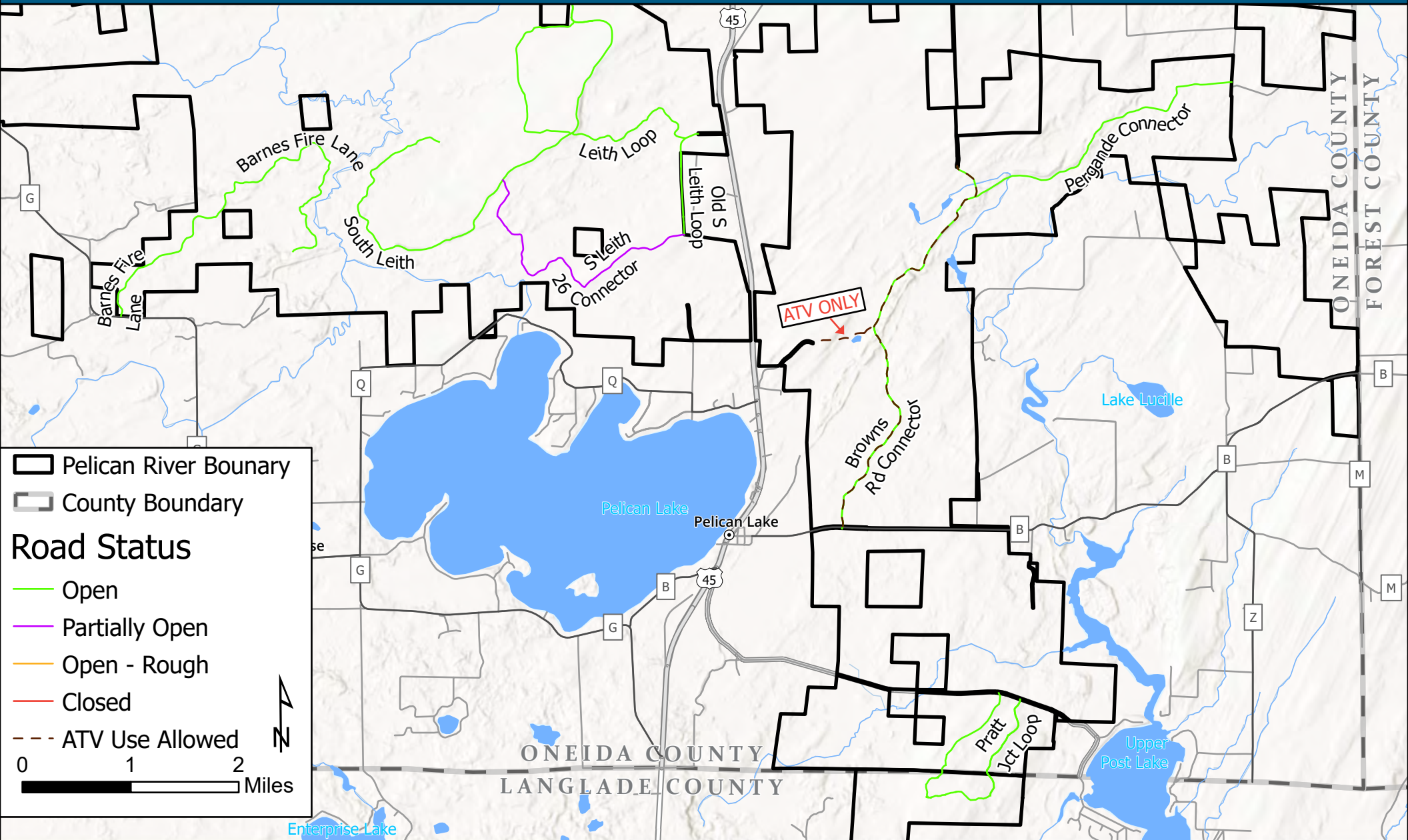
Pelican River Forest

Road Status: South

Learn more here:



THE CONSERVATION FUND



Welcome to the 70,000-acre Pelican River Forest. This private property is open to the public year-round with 70+ miles of roads available to the public June-December. This map displays the current status of all **Open Roads** available for travel by passenger vehicle. All additional woods roads and trails are not available for vehicular travel. **Open Roads** may be closed due to significant safety concerns and property management (i.e., logging operations). Road maintenance is ongoing and closed roads will be opened as soon as possible. If you have concerns, questions, or notifications about the **Open Roads** please contact: PRInfo@conservationfund.org